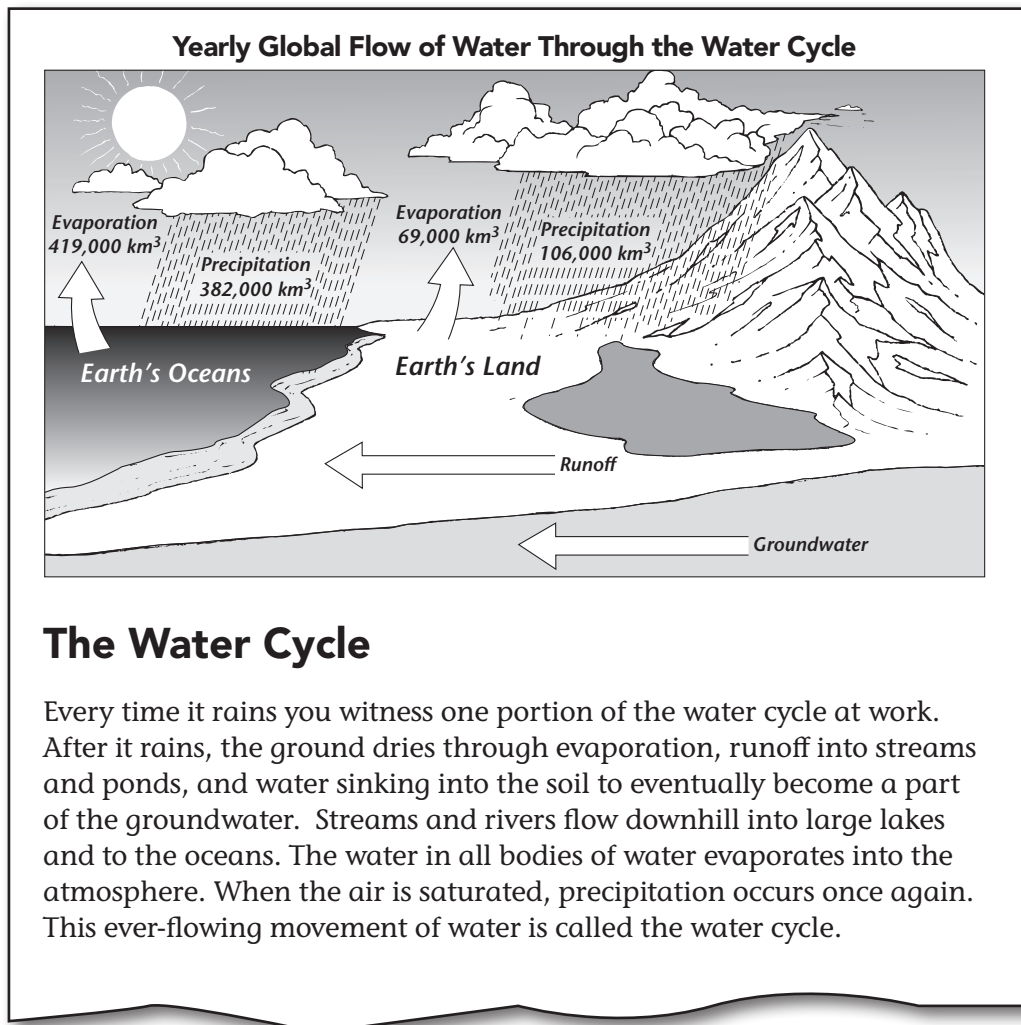


## Target Reading Skill: Relate Text and Visuals

Combining information from texts with information in visuals helps you learn the content clearly. Usually you find some kinds of information in one and other kinds of information in the other. That's why you want to use both.

Here is an example with both text and visuals.

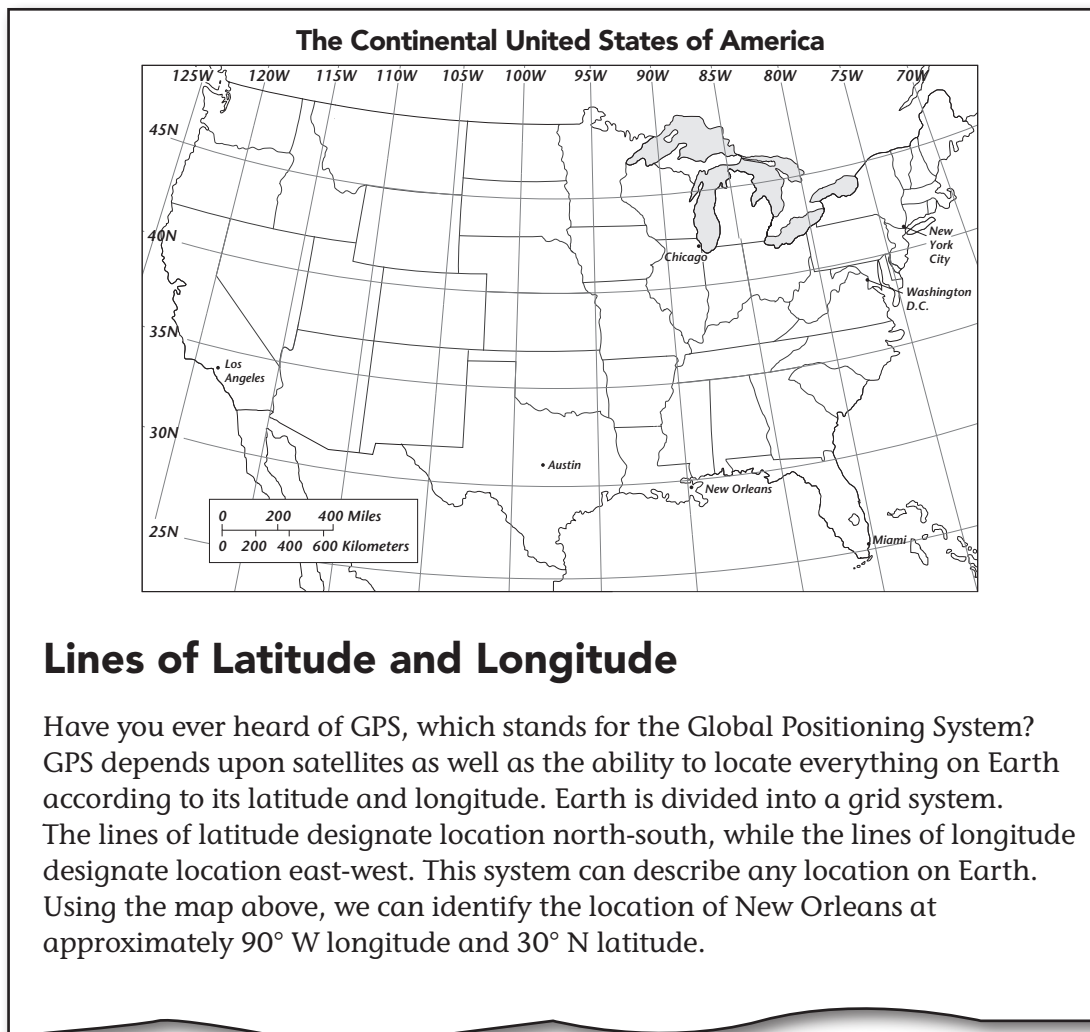


Discuss the following questions with a partner.

- What kinds of information did you learn from the text that you did not learn in the illustration?
- What kinds of information did you learn from the illustration that were not stated in the text?

**Relate Text and Visuals** *(continued)***TRY THIS**

1. Read the text and visual below. List four pieces of information you learned from each.



**Information from map:** \_\_\_\_\_

\_\_\_\_\_

**Information from text:** \_\_\_\_\_

\_\_\_\_\_

## Relate Text and Visuals *(continued)*

A timeline is a visual that shows the sequence and time frame of certain events. Timelines are drawn to scale, which means that each year (or decade or century) is represented by a consistent amount of space.

2. Read the text and visual below. List four pieces of information you learned from each.

The Development of Computers					
<b>1823</b> <b>The Difference Engine</b> British mathematician Charles Babbage designed the first computer, called the Difference Engine.		<b>1946</b> <b>ENIAC</b> The first American-built computer was developed by the United States Army and called Electronic Numerical Integrator and Calculator, or ENIAC.			
<b>1800</b>	<b>1850</b>	<b>1900</b>	<b>1950</b>	<b>2000</b>	
<b>1890</b> <b>Census Counting Machine</b> Herman Hollerith constructed a machine that processed information by allowing electric current to pass through holes in punch cards.		<b>1939</b> <b>Binary System</b> American physicists John V. Atanasoff and Clifford Berry produced a working model of a computer based on the binary system.		<b>1974</b> <b>Personal Computers</b> The first personal computer (PC) went on the market.	

**Development of the Computer Before the 21st Century**

Did you know the word “computer” once referred to a person who performs calculations? Today we know computers as machines that carry out computation at an incredible rate, but until the 1940s, people mainly used basic calculation devices, such as the slide rule. Mechanical computers were reserved for only the most important computations.

The computers we know today got their start when digital computers, including Colossus and ENIAC, replaced mechanical ones. Each computer filled an entire room, weighed many tons, and cost nearly a million dollars! Over time, new inventions and developments have led to the powerful and affordable personal computer. In the 21st century, hundreds of millions of personal computers are sold each year!

Information from timeline: \_\_\_\_\_

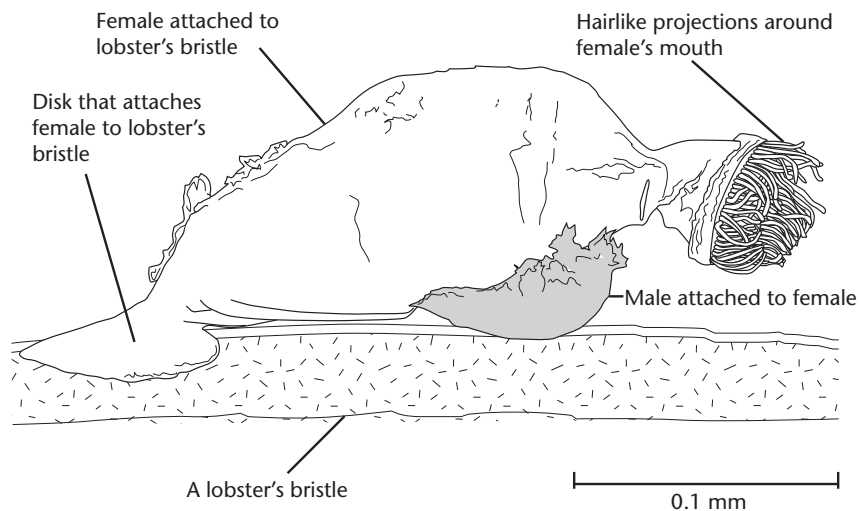
Information from text: \_\_\_\_\_

## Relate Text and Visuals *(continued)*

Now look at a diagram you might see in a life science chapter or in a book about strange animals. Read the text and study the diagram. Then answer the questions that follow.

### The Strange *Symbion Pandora*

*Symbion pandora* is an unusual type of animal discovered in 1995. It was found living in the ocean attached to the bristles of the Norwegian lobster. *Symbion pandora* does not harm the lobster, but it is better able to access food by collecting particles from the lobster's meal. For most of its life, *Symbion pandora* is neither male nor female. This creature is so unlike other animals that its discovery led to a new category of animal classification.



3. Are these animals large or small? Explain how you know.

---

---

4. Why do these animals need to attach themselves to lobsters?

---

---